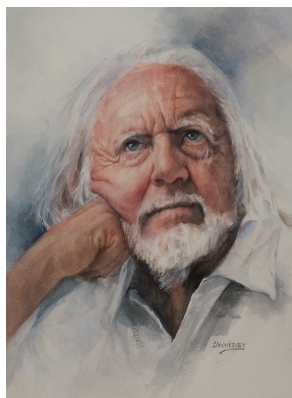




Call for Entries

Fall 2025 Members' Exhibition
October 14 through December 1, 2025
Holland Gallery of Fine Art
At the Holland Community Center
34250 N. 60th St., Bldg. B.
Scottsdale, AZ 85266 (480) 488-1090



Fall 2025 Exhibition Calendar

Friday, August 22nd, 4 p.m. (MST)	Submission deadline
Week of Sept. 15th	Notification sent by email and posted on website
Tues. Oct. 14th	Drop off at Holland Center between 9 to 11 a.m.
Fri. Oct. 24th	Awards Reception at Holland Center from 4:30 to 6:30 p.m.
Mon. Dec. 1st	Pickup artwork from Holland Center between 9 to 11 a.m.

Awards: A variety of cash and merchant awards will be presented at the awards reception.

Juror and Workshop instructor: Lian Quan Zhen is a much sought-after watercolor and Chinese painting artist. He teaches internationally and is one of the most popular authors of North Light Books. His educational background, artistic experiences and teaching credentials are too lengthy to list in this prospectus, but can be found on AWA's website at <https://azwatercolor.com/juror-spring-and-fall-workshop>. He will be teaching a 3-day workshop at the AAG building from October 9 through 11, 2025. You may contact Marion Droge with questions about the workshop at mdrogaz@gmail.com.

Eligibility/Terms and Conditions:

Review complete list of rules/specifications for acceptable entries on the website at <https://azwatercolor.com/acceptable-entries/>.

Artist must be a current member of AWA.

Work must have been completed in the past three years (no work created prior to October of 2022). Work may not have been previously shown in an AWA exhibition or at the Holland Center.

Work must be original and free from any copyright infringement. A copy or likeness of another artist's work is not admissible. Work done in any part, in a workshop is not admissible. Prints, giclees, digital

art, or A.I. generated art are not admissible. Source material must be your own design or your own photograph. Composition must be original and entirely the work of the entrant.

Work must be done on paper. (Paper includes natural or synthetic paper such as Yupo and paper mounted on a board so long as board is no thicker than 1/2 inch and can be matted as described below.) No canvases.

No varnished work.

Work must be done with water-based mediums (e.g., watercolor, gouache, acrylic, ink). Work may include collage so long as materials were originally white then painted with water-based medium. No alcohol inks or water-based oils.

Work must be matted, framed and ready to hang with a wire on the back that is taut and approximately 1/3 of the way from the top. Work must be protected by rigid plexiglass or acrylic. Mats/frames/plexiglass must be clean and without scratches. Glass may be used in place of plexiglass or acrylic if the size of the glass is 16 x 20 inches or less.

This venue requires that you list the following on the back of your artwork: title, artist name, medium, price, artist address, phone and email.

Size Requirements:

- The minimum artwork size that must show within the mat is 80 square inches (for example, 8 x 10 showing in mat).
- Mats must be white and non-textured. The exposed part of the mat must be a minimum width of 2 inches. (It is recommended that paintings exceeding the 8 x 10 or 9 x 12 sizes have wider mats of 3 to 4 inches because it looks more professional.)
- Frames must be simple and not exceed 2 inches in depth/width.
- The maximum framed size allowed for this show is 30 inches in any direction.

All terms and conditions for entry into this exhibition are required. The Exhibition Committee reserves the right to refuse any work not meeting these requirements and to prohibit your participation for two years in future shows for violations or failure to produce work for show after acceptance.

Submitting your entry:

All entries must be completed online. You may submit up to three entries for \$40. The steps for entering are as follows:

Step 1: Prepare Your Digital Images

Photos of your artwork should be taken at the highest resolution and saved in a "jpg" format.

- Crop photo to show only the artwork image.
- Resize photo so that it is 1800 pixels on the longest size and 300 dpi.
- Make sure total file size is less than 3 MB.
- Rename image (Use first four letters of your last name, then first four letters of your first name, hyphen (-), title. If the artwork title is lengthy please abbreviate it. For example, the image for the painting by Winslow Homer called "Sailboat on the Very Stormy Sea" would be renamed HomeWins-Sailboat.jpg.

Step 2: Entry Information

Fill out the entry form attached to this prospectus. You will use this information when entering online and the handwritten form should be saved for your reference.

Step 3: Payment

Pay your entry fee of \$40 online at <https://azwatercolor.com/fall-2025-exhibition>. You will receive an email that your payment has been successfully processed. DO NOT PAY TWICE. If the computer/wifi being used is slow, it may take a few minutes to process. **If you have any issue with payment or the Exhibition Entry Form does not load, contact Rupali Holmes at rupaliholmes@gmail.com and let her know the issue you experienced.**

Step 4: Entry Form

After your payment is processed, you will be directed to the entry form. You will use the image/information you prepared in steps 1 and 2 to complete the entry form. You will have to accept a consent statement at the bottom of the form and click Submit to complete the submission. Wait until a confirmation message appears before closing the browser.

The AWA website has helpful information on how to prepare your digital image. If this is your first show, or you are unfamiliar with these concepts, please review information on the website and please do not wait until the last minute to enter the show. While it is your responsibility to resize and rename your images, Betsy Aguirre will help with questions in this regard at awaexhibitions@gmail.com. Contact Karen Donmoyer at awaexhibits@gmail.com with all other questions.

Notification:

All artists will be notified by email of juror results. A list of accepted artwork/artists will also be posted on the website.

Shipping:

Contact Linda Pullinsi at lp@lindapullinsi.com if you wish to ship your art. There is a \$50 handling fee to be paid by check made out to her and included in your shipping box. Do not ship glass.

Information on the Venue, Sales and Commissions:

The Holland Center handles all sales for the duration of the exhibit and charges a 20% commission. The Holland Center requires that all art submitted be appropriate for children, and it retains the right to remove any piece they deem inappropriate.

AWA Spring 2025 Exhibition Record of Submission

Please fill this form out in advance of submitting your entry online. Then please save it so that you have a record of your entry information.

Entry 1

Digital file Name: _____

Title: _____

Medium _____

Price \$ _____

Image size Height _____ inches x Width _____ inches (Multiply height by width to make sure image that will show once matted, is greater than or equal to 80 square inches.)

OUTSIDE dimensions of frame Height _____ inches x Width _____ inches (Remember your frame must not exceed 30 inches in either direction and your frame width and depth must be less than 2 inches.)

Entry 2

Digital file Name: _____

Title: _____

Medium _____

Price \$ _____

Image size Height _____ inches x Width _____ inches

OUTSIDE dimensions of frame Height _____ inches x Width _____ inches

Entry 3

Digital file Name: _____

Title: _____

Medium _____

Price \$ _____

Image size Height _____ inches x Width _____ inches

OUTSIDE dimensions of frame Height _____ inches x Width _____ inches